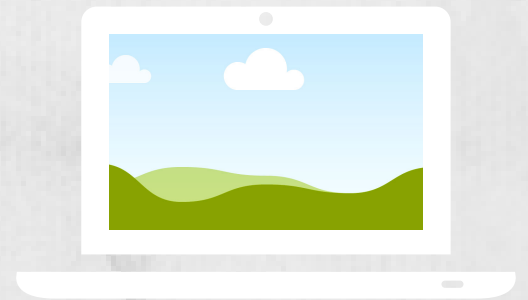


BELLEVUE SCHOOLS AND STUDENT LEARNING

The Primary aim of education is not to enable students to do well in school, but assist them to do well in their lives outside of school.

1 *MULTI-TEARED SYSTEMS OF SUPPORT - COLLABORATIVE LEARNING ENVIRONMENT.*

2 *PROBLEM BASED LEARNING OPPORTUNITIES*



3 *STANDARDS-BASED GRADING AND MEANINGFUL ASSESSMENTS*

4 *LEARNING BEYOND THE TEXTBOOK*



5 *BEYOND THE BASICS AND BASIC SKILLS*



6 *ENGAGEMENT IN LEARNING MEANINGFUL, REAL & RELEVANT LEARNING*



7 *SUPPLEMENTAL MATERIALS TO MEET LEARNING NEEDS (PROFESSIONAL JUDGMENT)*

8 *DURING AND END OF YEAR CHECKPOINTS TO MEASURE LEARNING*

